



# SAM Elimu Foundation

## Quarterly Report

Q1 2023

### Contact Us

#### Office Address

1001 Chestnut Street  
Suite 101  
Philadelphia, PA 19107

#### Email

[info@samelimucharity.org](mailto:info@samelimucharity.org)

Visit our [website](#) as we share more insights and interactions with the children.

You can also follow us on [Facebook](#), [Instagram](#), and [Twitter](#).

The new year started on a high note with all of our students resuming their classes. Our 11 elementary students attending the Jonathan Glog Academy reported back to school mid-January. It was a bittersweet return to school as the children shared their holiday stories and said how much they missed their classmates and housemates from the Kenya Children's Home, which is their second home. The children are settled in for the first term and are thriving.



*SAM Elimu children at the Jonathon Glog Academy*

### School Visits

The team has visited all the secondary students at their respective schools to ensure that they are settling into the new academic year. The visits allow us to strengthen our relationships with the new students and introduce them to veteran students. We have created families in our partner high schools to provide a support system to help each child succeed. The team also touched base with the tertiary (college) students to see if they need assistance or praise for academic achievement.



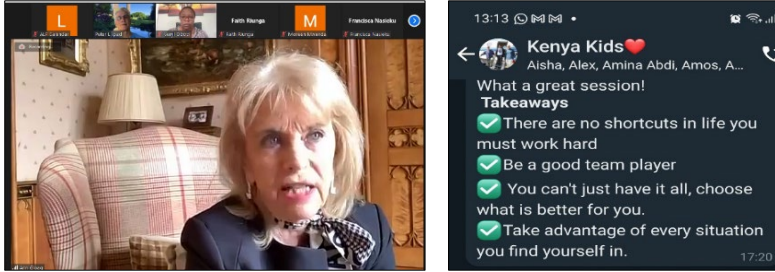
*School visits with the SAM Elimu secondary and tertiary students*

## Tertiary Students

### Monthly Zoom Conversations

Dr. Linneman held an engaging interview with Dame Anne Gloag. She shared her great insights on how she navigated business in a male dominated world, how she stood ground in the face of corruption and how her passion has seen her and her brother excel in business. She gave great advice to students to make the best of the degree certificate they have.

*Dame Anne Gloag during her Zoom conversation and the key takeaways from the session.*



## Impact

SAM Elimu is supporting **146 children** directly.

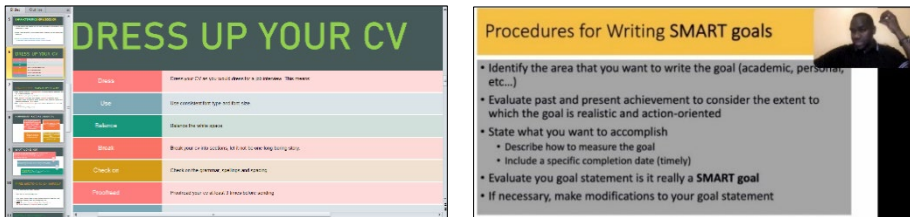
The LEWA Education program is working with **43 children** funded by SAM Elimu.

### SAM Elimu by the Numbers

Level	Students
Primary	11
High School	46
Tertiary	87
<b>Total</b>	<b>144</b>
Alumni	150
LEWA	43
<b>TOTAL</b>	<b>337</b>

### Winning Wednesday

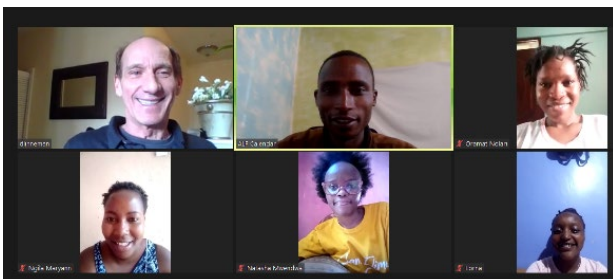
This quarter has been quite energetic with a conversation every Wednesday. We covered personal development, goal setting, emotional intelligence, social media management, networking, communication skills, critical thinking, self-awareness, and self-reliance.



Screen shots from Winning Wednesday sessions

### Hospitality Meetings

Doug Linneman has been holding periodic meetings with our hospitality students discussing how to navigate the industry. They discuss various videos on how to handle real life situations with guests. It is an eye opener for the students as they realize the challenges are similar across the globe. Also, because they are required to be on video and it's a small group, the students have become more engaged in discussions by sharing their knowledge and asking questions.



*Doug Linneman leading the discussions with the students studying hospitality.*

# Alumni Spotlight

## Interview with Pius Kigunda



**Tell us about yourself and your journey with SAM Elimu.** My name is Pius Kimathi and I joined the program in 2007. After high school, I attended Egerton University for my undergraduate studies. While pursuing my degree at Egerton, I also took part time CPA classes. I also undertook a post graduate diploma.

**How was life after graduation?** With all my degrees, I was still jobless for three years and this is when my passion for fashion and design was born. I ventured into the fashion and design business, which to date is doing well. I also have a job with Kenya Revenue Authority where I work in the customs department.

**What advice would you give an 18-year-old?** My advice would be to write down your vision board, work towards achieving your goals, believe in yourself and put your trust in God. Everything eventually falls into place with the right attitude.

**What advice would you give to recent SAM Elimu graduates?** Creating a personal brand can make you stand out from your competition and encourage networking opportunities with potential employers. Social media is a great tool and place to build personal brand and join relevant industry groups, engaging content and keeping updated on profile. Also practice your social skills.

**What impact has SAM Elimu had on you?** The organization built a strong foundation and helped me to identify good values and personality. Through SAM Elimu and education, I have developed a winning spirit.

